

Scientific Program



Advances in
Critical
Care

2024

October 11-12

Baylor
College of
Medicine

MICHAEL E. DeBAKEY
DEPARTMENT OF
SURGERY



Baylor St. Luke's
Medical Center



THE TEXAS HEART INSTITUTE*

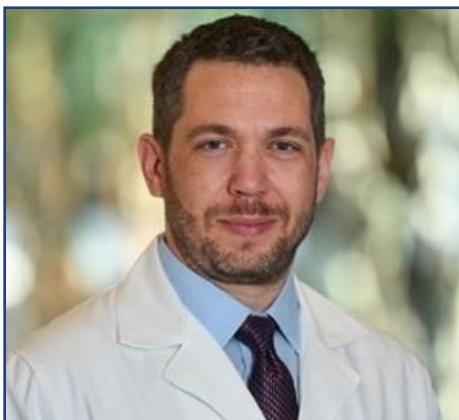
CONFERENCE ORGANIZERS



Subhasis Chatterjee, M.D.*
Associate Professor of Surgery
Baylor College of Medicine

Director, Thoracic Surgical ICU & ECMO Program
Baylor St. Luke's Medical Center

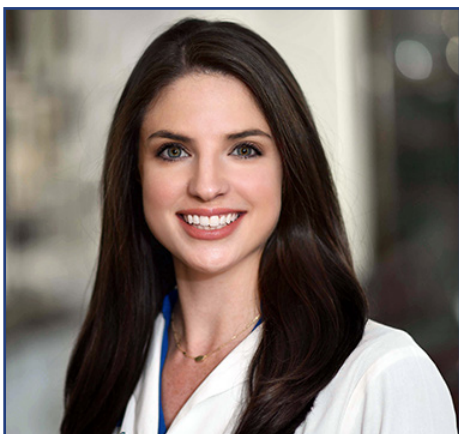
*Conference Chair
*Program Director



Christopher Howard, M.D.
Assistant Professor
Pulmonary, Critical Care and Sleep Medicine
Baylor College of Medicine

Medical Director, Respiratory Care
Baylor St. Luke's Medical Center

*Conference Co-Chair
*Program Director



Holly Clayton, M.P.A.S., PA-C
Assistant Professor of Surgery

Director of Advanced Clinical Practitioners
and Clinical Services
Baylor College of Medicine



Jesmi Jacob MSN, RN, CCRN
Registered Nurse
Baylor St. Luke's Medical Center



José L. Díaz-Gómez, M.D., MAS*
Adjunct Professor of Anesthesiology
Baylor College of Medicine

Enterprise Vice-Chief
Integrated Hospital Care Institute
Cleveland Clinic Health System
Abu Dhabi, United Arab Emirates

*Conference Co-Chair
*Program Director



Jennifer M. Leonard, M.D., Ph.D.
Associate Professor of Surgery
Baylor College of Medicine



Amy Westwick Butcher, PA-C
Physician Assistant
Cardiothoracic Surgery
South Shore University Hospital
Northwell Health

ORGANIZING COMMITTEE

Jordan Lockhart
Sharon Galloway
Scott Holmes
Brenda Jones
Stephanie Jackson

MEET YOUR KEYNOTE SPEAKERS



“A Fresh Perspective on Vasoactive Medications”

Eddy Gutierrez, M.D.
Intensivist and Director
Cardiac and Cardiothoracic ICU Baptist
Health - Jacksonville, Florida

Dr. Eddy Joe Gutierrez is an intensivist at Baptist Medical Center in Jacksonville, Florida, where he directs the state’s top-ranked cardiac and cardiothoracic ICU. A passionate educator, he shares evidence-based practices in Critical Care Medicine through his popular social media platform, @eddyjoemd, and hosts ‘The Saving Lives Podcast.’ He is also the author of the best-selling ‘The Vasopressor & Inotrope Handbook.



“The Transformative Capability of ECMO for Out of Hospital Cardiac Arrest”

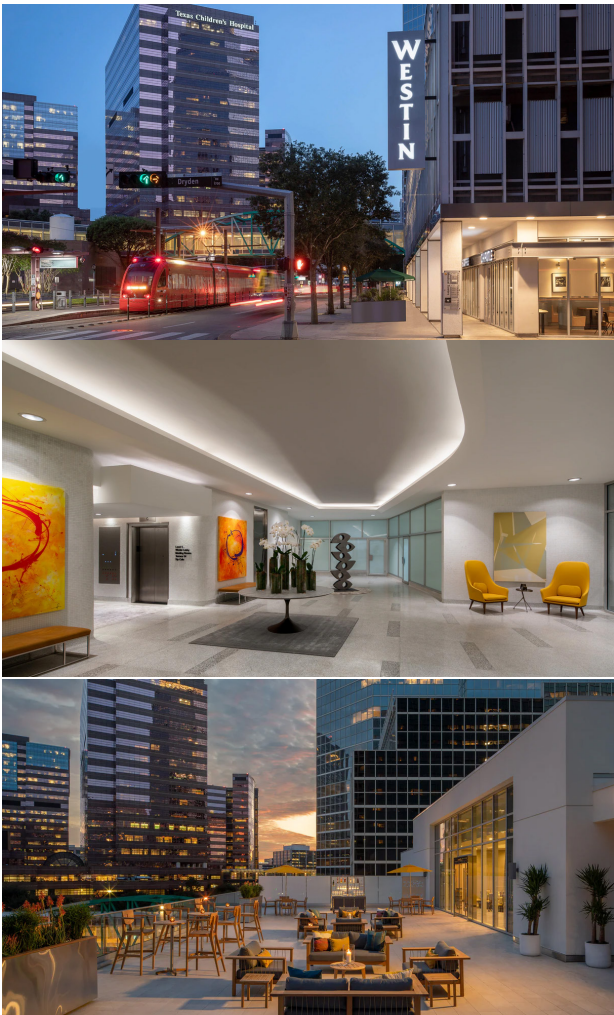
Jason Bartos, M.D.
Associate Medical Director
Center for Resuscitation Medicine University
of Minnesota
President, Minnesota Mobile
Resuscitation Consortium

Dr. Jason Bartos was born in Maple Plain, MN, where he grew up before pursuing a robust academic journey. He completed his undergraduate studies in Chemistry and Psychology at St. John’s University, followed by a PhD in Pharmacology from the University of Iowa. His medical training took him to Stanford University School of Medicine, where he earned his MD and completed a residency in Internal Medicine. In 2012, Dr. Bartos joined the University of Minnesota, completing fellowships in Cardiovascular Medicine, Critical Care Cardiology, and Interventional Cardiology.

Dr. Bartos is board-certified in Internal Medicine, Cardiology, Critical Care Medicine, and Interventional Cardiology. His clinical expertise spans cardiac critical care, resuscitation, advanced hemodynamic support, pulmonary embolism, and coronary artery disease and intervention. He currently serves as the Medical Director of the Cardiovascular Intensive Care Unit.

With over 20 years of research experience, Dr. Bartos focuses on resuscitation, advanced hemodynamic support, and recovery from cardiac arrest. His work has delved into ischemia and reperfusion injury, exploring molecular pathways of injury in cerebral ischemia and developing potential therapies to mitigate reperfusion injury in heart transplantation, myocardial infarction, and refractory cardiac arrest.

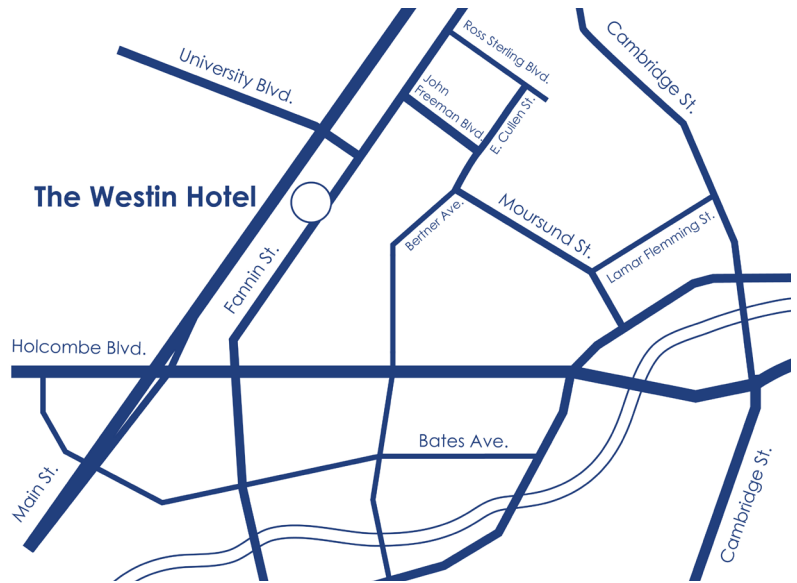
As the associate medical director of the Center for Resuscitation Medicine at the University of Minnesota and president of the Minnesota Mobile Resuscitation Consortium, Dr. Bartos is dedicated to improving cardiac arrest survival rates. His efforts have led to the creation of protocols that include rapid field transport, peripherally placed veno-arterial ECMO, coronary reperfusion, and specialized cardiac intensive care for patients with refractory VT/VF cardiac arrest.



VENUE

The Westin Houston Medical Center/Museum District

1709 Dryden Road
Houston, Texas 77030
(713) 730-2404



ABOUT THE CONFERENCE

The 5th Annual Advances in Critical Care Conference will feature speakers from the Texas Medical Center and around the country discussing all aspects of critical care. Topics will include the latest advances in sepsis, acute respiratory distress syndrome (ARDS), shock, trauma, and neurocritical care. Join us for cutting-edge discussions on extracorporeal membrane oxygenation (ECMO), mechanical circulatory support, and neuromonitoring. Breakout sessions will focus on ICU systems, team dynamics, and much more.

This multidisciplinary and multispecialty symposium allows the entire critical care team and care network to engage in a two-day meeting to discuss these topics. We hope to offer clinicians a better understanding of why they do what they do, evidence-based presentations to modify their existing practice, a collaborative network to share and engage in ideas, and a thirst to acquire new knowledge to improve patient care at their institutions.

CME Information

Learning Objectives

At the conclusion of this symposium, the participant should be able to:

- Demonstrate improved understanding on the latest advances in sepsis management.
- Recognize and provide fundamental management for hemoptysis with improved ability to coordinate for higher level interventions.
- Identify patients with ARDS who are candidates for advanced therapies and interventions.
- Recognize patients in cardiogenic shock who need mechanical circulatory support.
- Identify obstetrical patients in need of critical care and the fundamentals of management.
- Recognize biomarkers highlighting early identification of acute kidney injury.

Target Audience

The symposium has been designed for critical care intensivists from all disciplines, pulmonologists, cardiologists, surgeons, interventionalists, and perfusionists; family and general practitioners; nurses, nurse practitioners, and physician assistants specializing in critical care, cardiology, surgery, endocrinology, neurology, hepatology, transplantation, and obstetrics/gynecology.

Accreditation

This activity has been planned and implemented in accordance with the accreditation requirements and policies of the Accreditation Council for Continuing Medical Education (ACCME) through the joint providership of The Texas Heart Institute and Baylor College of Medicine. The Texas Heart Institute is accredited by the ACCME to provide continuing medical education for physicians.

Credit Designation

The Texas Heart Institute designates this live activity for a maximum of **18.50 AMA PRA Category 1 Credits™**. Physicians should only claim credit commensurate with the extent of their participation in the activity.

Learning Outcome: 80% of Attendees will be able to identify at least two evidence-based practice interventions to incorporate into current practice.

ABIM MOC Credit

Successful completion of this CME activity, which includes participation in the evaluation component, enables the participant to earn up to **18.50 Medical Knowledge MOC points** in the American Board of Internal Medicine's (ABIM) Maintenance of Certification (MOC) program. Participants will earn MOC points equivalent to the amount of CME credits claimed for the activity. It is the CME activity provider's responsibility to submit participant completion information to ACCME for the purpose of granting ABIM MOC credit. Successful completion is a passing grade of 70% on the assessment in the CME evaluation.

DEADLINE: The deadline to complete the MOC section of the CME evaluation is 2 weeks after the day of the symposium.

Ethics

This activity has been designated by The Texas Heart Institute for **1.00 hour** of education in medical ethics and/or professional responsibility.

CEU Information

CHI St. Luke's Health Baylor St. Luke's Medical Center is approved as a provider of nursing continuing professional development by the Louisiana State Nurses Association Approver Unit, an accredited approver by the American Nurses Credentialing Center's Commission on Accreditation. LSNA Provider No. 4002068. Nurses can receive up to **16.75 CNE**.

SCIENTIFIC PROGRAM

Friday, Oct. 11, 2024

Foyer

- 7:00-7:30am Registration and Breakfast
- 7:30-7:45am Welcome - Subhasis Chatterjee, M.D.

Session I: Latest Advances in Sepsis

Moderators: Christopher Howard, M.D.
and Sergio Trevino Castillo, M.D.

- 7:45-7:55am Two Sepsis Trials From 2023 You Should Know
Christina Kao, M.D.
- 7:55-8:05am Status of Steroids for ARDS
Stephen M. Pastores, M.D.
- 8:05-8:15am Vasopressor Management in Septic Shock: Escalation Strategies
Patrick Wieruszewski, Pharm.D. R.Ph.
- 8:15-8:25am Next Generation Biomarkers in Sepsis
Fatima Adhi M.D.
- 8:25-8:35am Sepsis Guidelines: Where We Go Next
Laura Evans, M.D.
- 8:35-8:55am Panel Discussion

Azure

Session II: GI and Nutrition

Moderators: Yesenia Rojas-Khalil, M.D.
and Muhammad Hayat Syed, M.D.

- 9:00-9:10am Interventions on the Gut Microbiota in Critical Care
Jennifer Leonard, M.D., Ph.D.
- 9:10-9:20am Esophageal Perforation: Non-Surgical Management
Shawn Groth, M.D.
- 9:20-9:30am ICU Considerations in the Bariatric Patient
Juliet Holder-Haynes, M.D.



- 9:30-9:40am Latest Advances in the Management of Acute Liver Failure
Risë Stribling, M.D.
- 9:40-10:00am Panel Discussion
- 10:00-10:15am Break and Exhibits

Session III: Pulmonary Emergencies

Moderators: Philip Alapat, M.D. and Lorraine Cornwell, M.D.

- 10:15-10:25am Massive Hemoptysis
R. Taylor Ripley, M.D.
- 10:25-10:35am Clinical Pearls in the Management of Asthma/COPD Exacerbation
Muhammad Adrish, M.D., MBA
- 10:35-10:45am Latest in Pneumothorax Management
Donald Lazarus, M.D.
- 10:45-10:55am Prostacyclin vs Inhaled Nitric Oxide
Kamrouz Ghadimi, M.D., MHSc
- 10:55-11:15am Panel Discussion

Session IV: Healthcare Systems

Moderators: Laura Evans, M.D. and Subhasis Chatterjee, M.D.

- 11:15-11:25am How Do We Define Value in Healthcare?
Bradley Lembcke, M.D., MBA
- 11:25-11:35am The Future of the ICU is Lean
Sergio Zanotti-Cavazzoni, M.D.
- 11:35-11:45am The Future of the ICU is Green
Faisal Masud, M.D.
- 11:45-11:55am Cyberthreats in Healthcare: The System Responds
Syed Raza, M.D.
- 11:55-12:15am Panel Discussion

- 12:15-1:10pm Keynote Speaker and Lunch
“A Fresh Perspective on Vasoactive Medications” - Eddy Gutierrez, M.D.

Session V Concurrent: ICU Liberation

Moderators: Christi Knapp, RN and Christopher Howard, M.D.

- Azure**
- 1:15-1:25pm Physical Therapy Involvement for Early Mobilization
Kristin Beck, DPT
 - 1:25-1:35pm Delirium Management: Advice from Psychiatry
Jose Ribas Roca, M.D.
 - 1:35-1:45pm Effective Family Communication and Engagement
Prasad Manian, M.D., MBBS
 - 1:45-1:55pm Earlier Extubation – Strategies that Work
Scott Leikin, D.O.
 - 1:55-2:15pm Panel Discussion

Session VI Concurrent: Critical Care in OB

Moderators: Amir Shamshirsaz, M.D. and David Muigai, M.D.

- Carmine/Verdure**
- 1:15-1:25pm Post-partum Hemorrhage
Karin Fox, M.D., M.Ed
 - 1:25-1:35pm Peri-partum Cardiomyopathy
Christopher Broda, M.D.
 - 1:35-1:45pm Preeclampsia, HELLP Syndrome
Mary Tolcher, M.D., MSc
 - 1:45-1:55pm Amniotic Fluid Embolism
Marie Baldisseri, M.D.
 - 1:55-2:15pm Panel Discussion



Session VII Concurrent: Emergency Airway Management

Moderators: Edward Yang, M.D. and Javeryah Safi, M.D.

2:15-2:25pm	Intubation in the ICU versus the OR: The Anesthesiology/Intensivist Perspective Cesar A. Castillo, M.D.
2:25-2:35pm	Pros and Cons of Augmented Devices for Intubation Dharani K. Narendra, M.D.
2:35-2:45pm	Tracheostomy Troubleshooting Ramiro Fernandez II, M.D.
2:45-2:55pm	The Surgical Airway: Emergency Tracheotomy N. Eddie Liou, M.D.
2:55-3:15pm	Discussion

Session VIII Concurrent: HAT = Hematology, Anticoagulation, Thrombosis

Moderators: Christopher Morgan, M.D. and Orlando Suero, M.D.

2:15-2:25pm	Tumor Lysis Syndrome Karen Riggins, M.D., Ph.D.
2:25-2:35pm	Viscoelastic Testing (ROTEM, TEG, & Quantra) Meredith Reyes, M.D.
2:35-2:45pm	Cytokine Release Syndrome Martha Mims, M.D., Ph.D.
2:45-2:55pm	ECMO and Anticoagulation: An Ongoing Challenge Ellen B. Yin, Pharm.D.
2:55-3:15pm	Panel Discussion
3:15-3:30pm	Break and Exhibits

Session IX Concurrent: Cardiogenic Shock

Moderators: Alexis Shafii, M.D. and Nikolaos Diakos, M.D., Ph.D.

- 3:30-3:40pm Cardiogenic Shock after Cardiac Surgery:
Surgeon Perspective
Anna Han Xue, M.D.
- 3:40-3:50pm Microaxial Flow Pumps in Cardiogenic
Shock: Management and Troubleshooting
Aniket Rali, M.D.
- 3:50-4:00pm Prehabilitation and Temporary MCS
Anju Bhardwaj, M.D.
- 4:00-4:10pm Liberation from VA ECMO
Bindu Akkanti, M.D.
- 4:10-4:20pm Durable MCS: Today and Tomorrow
Andrew Civitello, M.D.
- 4:20-4:40pm Panel Discussion

Session X Concurrent: Neuro Critical Care

Moderators: Rahul Damani, M.D. and Scott Leikin, D.O.

- 3:30-3:38pm Neuroradiology for the Intensivist
Ravi K. Shastri, M.D.
- 3:38-3:46pm Neurologic Complications and Acute Liver
Failure: Neurologist Perspective
Tiffany R. Chang, M.D.
- 3:46-3:54pm Management of Spinal Cord Trauma
Marcus Hoffman, M.D.
- 3:50-4:00pm Spinal Drain Management
Connie Arrington, CNP
- 4:00-4:10pm Non-Convulsive Status Epilepticus
in the ICU - Khwaja A. Siddiqui, M.D.
- 4:10-4:40pm Panel Discussion
- 4:40-4:45pm Closing Statements - Subhasis Chatterjee, M.D.
- 4:45-6:15pm Poster and Cocktail Reception
Moderators: Christopher Howard, M.D., Holly Clayton, M.P.A.S.,
PA-C, and Jesmi Jacob, MSN, RN, CCRN
- 7:00-9:30pm Faculty Dinner

Saturday, Oct. 12, 2024

7:00-7:30am Registration and Breakfast

7:35-7:45am Welcome
Subhasis Chatterjee, M.D.

Session XI: Cardiac Critical Care

Moderators: Alexander Schutz, M.D. and Mourad Senussi, M.D.

7:45-7:55am Takotsubo Cardiomyopathy: Acute Presentations and Management
Ajith P. Nair, M.D.

7:55-8:05am VT Storm: How to Manage
Nilesh Mathuria, M.D.

8:05-8:15am Type B Aortic Dissection: Management Strategies
Vicente Orozco-Sevilla, M.D.

8:15-8:25am Anticoagulation for Postop Atrial Fibrillation
Subhasis Chatterjee, M.D.

8:25-8:35am Type 2 Demand Ischemia: Cardiologist's Role
Priyanka Sen, M.D.

8:35-9:00am Panel Discussion

Session XII: Acute Respiratory Failure

Moderators: Christina Kao, M.D. and Christopher Howard, M.D.

9:00-9:10am Which ARDS Guidelines am I using?
ATS vs ESICM
Hayley B. Gershengorn, M.D.

9:10-9:20am High Flow is Not Just for Hypoxemia?
Vishal Demla, M.D.

9:20-9:30am Status of Steroids for Sepsis:
Latest Evidence
Deepa Gotur, M.D.

9:30-9:40am ICU Liberation-Making the Case for ICU and Hospital Leaders
Christopher Howard, M.D.

9:40-10:00am Panel Discussion

10:00-10:15am Break and Exhibits

Session XIII: Acute Kidney Injury/Nephrology

Moderators: Katherine Timmins, M.D.
and Subhasis Chatterjee, M.D.

10:15-10:25am Biomarkers in AKI
Kianoush Kashani, M.D., MSc

10:25-10:35am AKI in Sepsis: Latest Advances
Hernando Gomez Danies, M.D., MPH

10:35-11:15am Fireside Chat with the Experts: Everything You Wanted to Know About AKI
Kianoush Kashani, M.D., MSc
and Henando Gomez Danies, M.D., MPH

Session XIV: Support and Resilience

Moderators: Astrid Grouls, M.D.
and José L. Díaz-Gómez, M.D., MAS

11:15-11:25am Finding Support for Patients and Providers
Shanda Blackmon, M.D., MPH

11:25-11:35am Preventing Moral Injury: Protecting Providers
Claire Horner, J.D., M.A.

11:35-11:45am Ethics Training for the Next Generation of Surgeons
Piroska Kopar M.D., MBA

11:45-11:55am Palliative Care Does Not Equal “Pull the Plug”
Syed Rizvi, M.D.

11:55-12:15am Panel Discussion

12:15-1:15pm Keynote Speaker and Lunch
“The Transformative Capability of ECMO for Out of Hospital Cardiac Arrest”
Jason Bartos, M.D.



Session XV Concurrent: APP Breakout Session

Loyce Mofor, AGACNP-BC and Blake Menchaca, AGACNP

- | | |
|-------------|---|
| 1:20-1:30pm | APPs Leading Change: Tips for Organizations and Emerging Leaders
Holly Clayton, MPAS, PA-C |
| 1:30-1:40pm | APP Critical Care Onboarding: Best Practices
Robert Webster, PA-C |
| 1:40-1:50pm | Critical Communication Skills for Critical Care APPs
Sarah Morrissey, MS, APRN, FNP-BC |
| 1:50-2:00pm | Giving Back: APPs in Global Outreach and Service
Kwame Akuamoah-Boateng, DNP, ACNP-BC |
| 2:00-2:20pm | Panel Discussion |

Session XVI Concurrent: Patient Centered Care: Artificial Intelligence, Wearable Technology, Latest Advances

Moderators: James P. Herlihy, M.D. and Ravi K. Ghanta, M.D.

- | | |
|-------------|---|
| 1:20-1:30pm | Noninvasive Hemodynamic Monitoring
Mourad Senussi, M.D., MS |
| 1:30-1:40pm | Remote Monitoring for Patient Recovery
Jayer Chung, M.D. |
| 1:40-1:50pm | Digital Solutions to Patient Care
Shanda Blackmon, M.D., MPH |
| 1:50-2:00pm | Machine Learning in Critical Care
Matthew Segar, M.D. |
| 2:00-2:20pm | Panel Discussion |
| 2:20-2:45pm | Networking Break and Exhibits |

Azure

Carmine/Verdure

Foyer

Session XVII Concurrent: Nursing Breakout Session

Moderators: Jesmi Jacob, MSN, RN, CCRN
and Keegan Collins, MPAS, PA-C

Azure

- 2:45-2:55pm ICU Nursing Retention: The Issue on All Our Minds
Olga Ortega, BSN, RN, CVRN-BC
- 2:55-3:05pm Reducing Post Intensive Care Unit Syndrome
Sharon Vu, NP and Daniela Moran, M.D.
- 3:05-3:15pm The Difference Between a Good and Great Nurse: Intensivist Perspective
Sri Kartik Valluri, M.D.
- 3:15-3:25pm The Difference Between a Good and Great Intensivist: Nursing Perspective
Blake Menchaca, AGACNP
- 3:25-3:45pm Panel Discussion

Session XVIII Concurrent: ICU Pharmacology

Moderators: Orlando Suero, M.D.
and Giang (Zane) Quach, D.O.

Carmine/Verdure

- 2:45-2:55pm Multi-modal Analgesia and Minimizing Opioids
Ramy Castillo, Pharm.D.
- 2:55-3:05pm GLP-1, SGLT2 Inhibitors and Surgery
Yangseon Park, M.D.
- 3:05-3:15pm ECMO/CRT Pharmacology Considerations
Patrick Wieruszewski, PharmD., RPh
- 3:15-3:25pm Immune Related Adverse Events from Immune Checkpoint Inhibitors
Russell Clark, Pharm.D.
- 3:25-3:45pm Panel Discussion





Session XIX Concurrent: Ultrasound Session

Moderators: Ali Omranian, M.D. and Yangseon Park, M.D.

- | | |
|-------------|--|
| 3:45-3:55pm | Current Controversy in Critical Care Ultrasound
José L. Díaz-Gómez, M.D., MAS |
| 3:55-4:05pm | Resuscitative TEE
Orlando Suero, M.D. |
| 4:05-4:15pm | US-Guided Subclavian Access: A Skill for All
Mourad Senussi, M.D., MS |
| 4:15-4:25pm | NeuroPOCUS
Mohammad Hirzallah, M.D. |
| 4:25-4:45pm | Panel Discussion |

Session XX Concurrent: Advances in Traumatology

Moderators: Jennifer Leonard, M.D., Ph.D. and Jeremy Ward, M.D.

- | | |
|-------------|---|
| 3:45-3:55pm | Surgical Innovations in Chest Wall Trauma
R. Mario Vera, M.D. |
| 3:55-4:05pm | Extenuating Circumstances - The Approach to the Trauma Patient with Unique Presentations
Sarah Allen, PA-C |
| 4:05-4:15pm | Video Review for Trauma Quality Improvement
Ryan Dumas, M.D. |
| 4:15-4:25pm | Whole Blood Transfusion: When, Why, How?
Ryan Dumas, M.D. |
| 4:25-4:45pm | Panel Discussion |
| 4:45-5:00pm | Closing Statements
Subhasis Chatterjee, M.D. |

Azure

Carmine/Verdure

Azure

CME Credit and Evaluation

To receive your CME credits, you must complete the CME Evaluation

The CME Evaluation QR code will be available to scan during lunch on Day-2 of the Symposium and will be located at the Registration Desk.

After completing the Evaluation, you will be directed to the CME Portal

Sign in (or create a new account)

To create a new account, type in your email address and choose “Create Account – Enter your Last Name and Phone Number – Choose Continue”

Select the appropriate credit and receive CME credit for this symposium (You can print your certificate once connected to a printer)

NOTE: You must complete ALL STEPS to successfully obtain your CME credit.

NURSING Credit and Evaluation

To receive contact hours for this continuing education activity, the participant must:

- Sign In On the CNE Attendance Roster
- Attendance at (1) or more sessions (Full or Partial CNE credit)
- Complete and Submit the evaluation survey for each presenter of the conference- Scan QR Code to access evaluation

Once successful completion has been verified, a “Certificate of Successful Completion” will be awarded for up to 16.75 contact hours. You will receive your CE Certificate via email within 7 business days of receipt of the completed evaluation form.

Relevant Financial Relationships The activity’s Nurse Planner has determined that no one, who has the ability to control the content of this CNE activity (planning committee members and presenters/authors/content reviewers) has any relevant financial relationships.

Explanation: Financial relationship: A financial relationship of any dollar amount is defined as relevant if the educational content is related to the business lines or products of the ineligible company. **Ineligible company:** Any entity whose primary business is producing, marketing, selling, reselling, or distributing health care products used by or on patients. All planners and presenters/authors/content reviewers must disclose the presence or absence of a financial relationship relative to this activity. Relevant financial relationships are resolved prior to the planning, implementation, or evaluation of the continuing nursing education activity.

Faculty

Subhasis Chatterjee, MD, FACS, FACC, FCCP Conference Chair*
Academic Professional Staff
The Texas Heart Institute
Associate Professor of Surgery
Trauma and Acute Care Surgery
Cardiothoracic Surgery
Baylor College of Medicine
Director, Thoracic Surgical ICU & ECMO Program
St. Luke's Health – Baylor St. Luke's Medical Center
Houston, Texas

José L. Díaz-Gómez, MD, MAS, FCCM, FASE, NCC (UCNS) Conference Co-Chair*
Institute Chair, Critical Care
Departments of Anesthesiology, Critical Care Medicine, Emergency Medicine, Hospital
Medicine, Infectious Disease, and Pulmonary Medicine
Vice-Chief, Integrated Hospital Care Institute at Cleveland Clinic Health System
Cleveland Clinic Abu Dhabi
Abu Dhabi, United Arab Emirates

Christopher Howard, MD, FCCP Conference Co-Chair*
Assistant Professor
Medicine-Pulmonary, Critical Care and Sleep Medicine
Baylor College of Medicine
Medical Director, Respiratory Care
St. Luke's Health – Baylor St. Luke's Medical Center
Houston, Texas

Fatima Adhi, MD
Assistant Professor of Medicine
Baylor College of Medicine
Texas Children's Hospital
St. Luke's Health – Baylor St. Luke's Medical Center
Houston, Texas

Muhammad Adrish, MD, MBA, FCCP, FCCM
Associate Professor
Medicine - Pulmonary, Critical Care and Sleep Medicine
Baylor College of Medicine
Ben Taub Hospital
Houston, Texas

Bindu Akkanti, MD
Associate Professor
Department of Internal Medicine
Medical Director, Heart Failure ICU, Heart & Vascular Institute
McGovern Medical School
The University of Texas Health Science Center at Houston
Houston, Texas

Kwame Akuamoah-Boateng DNP, ACNP-BC, BSN, FCCM
Acute Care Surgical Services / Trauma
Department of Surgery
Virginia Commonwealth University
VCU Health
Richmond, Virginia

Philip Alapat, MD
Assistant Professor
Medicine-Pulmonary
Program Director, Pulmonary & Critical Care Medicine Fellowship
Baylor College of Medicine
St. Luke's Health – Baylor St. Luke's Medical Center
Ben Taub Hospital
Houston, Texas

Sarah Allen, PA-C
Instructor
Surgery/HCHD Division
Baylor College of Medicine
Physician Assistant
Ben Taub General Hospital
Houston, Texas

Physician Assistant
HealthTrust Workforce Solutions
St. David's South Austin Medical Center
Austin, Texas

Connie Arrington, AGACNP-BC
Critical Care Medicine
St. Luke's Health – Baylor St. Luke's Medical Center
Houston, Texas

Marie Baldisseri, MD, MPH, FCCM
Professor Emeritus, Critical Care Medicine
Co-Director, Neurovascular ICU, UPMC Presbyterian Hospital
Program Director, Global Health, Department of Critical Care Medicine
Department Liaison, UPMC Quality and Improvement Initiative Committee
University of Pittsburgh
Clinical Associate Professor, Chatham University
Pittsburgh, Pennsylvania

Jason Bartos, MD, PhD
Associate Professor of Medicine
Cardiovascular Division
University of Minnesota Medical School
Medical Director, Cardiovascular Intensive Care Unit
Associate Medical Director, Center for Resuscitation Medicine
University of Minnesota
President, Minnesota Mobile Resuscitation Consortium
Minneapolis, Minnesota

Kristin Beck, DPT
Senior Physical Therapist
CHI St. Luke's Health
Houston, Texas

Anju Bhardwaj, MD, FACC, FHFSA
Assistant Professor
Department of Advanced Heart Failure
Director ICU, Advanced Cardiopulmonary Therapies and Transplantation
McGovern Medical School
The University of Texas Health Science Center at Houston
Houston, Texas

Shanda Blackmon, MD, MPH, FACS
Olga Keith Weiss Endowed Professor in Surgery
Executive Director, Lung Institute
Baylor College of Medicine
Houston, Texas

Christopher Broda, MD
Assistant Professor
Pediatrics
Cardiology
Baylor College of Medicine
Adult Congenital Heart Program
Fontan Go! Program
Texas Children's Hospital
Houston, Texas

Amy Westwick Butcher, MS, PA-C Conference Organizer
Physician Assistant
Cardiothoracic and Thoracic Surgery/CTICU
South Shore University Hospital
Northwell Health
Bayshore, New York

Cesar A. Castillo, MD
Assistant Professor
Department of Anesthesiology
Baylor College of Medicine
St. Luke's Health – Baylor St. Luke's Medical Center
Houston, Texas

Ramya Castillo, PharmD
Cardiology Clinical Pharmacy Specialist
CVICU and Hemostasis/Thrombosis Clinical Pharmacist II
St. Luke's Health – Baylor St. Luke's Medical Center
Houston, Texas

Tiffany R. Chang, MD
Assistant Professor
Vivian L. Smith Department of Neurosurgery
McGovern Medical School
The University of Texas Health Science Center at Houston
Memorial Hermann
Houston, Texas

Jayer Chung, MD, MSc
Associate Professor of Surgery
Division of Vascular Surgery & Endovascular Therapy
Associate Chief, Division of Vascular Surgery and Endovascular Therapy
Medical Director, Vascular Surgery
Baylor College of Medicine
Baylor St. Luke's Medical Center
Houston, Texas

Andrew Civitello, MD, FACC
Academic Professional Staff
The Texas Heart Institute
Associate Professor
Medicine - Cardiology
Baylor College of Medicine
Medical Director, Heart Transplant Program
Program Director, Advanced Heart Failure and Transplant Cardiology Fellowship
St. Luke's Health – Baylor St. Luke's Medical Center
Houston, Texas

Russell Clark, PharmD, BCOP
Clinical Pharmacy Specialist
Hematology and Oncology
St. Luke's Health – Baylor St. Luke's Medical Center
Houston, Texas

Holly Clayton, MPAS, PA-C Conference Organizer
Assistant Professor
Surgery
General Surgery / Surgical Oncology
Director, Advanced Clinical Practitioners and Clinical Services
Baylor College of Medicine
St. Luke's Health – Baylor St. Luke's Medical Center
Houston, Texas

Keegan Collins, MPAS, PA-C
Instructor/PA
Baylor St. Luke's Medical Group
Baylor College of Medicine
CHI St. Luke's Health – Baylor St. Luke's Medical Center
Houston, Texas

Lorraine Cornwell, MD, FACS
Associate Professor of Surgery
Division of Cardiothoracic Surgery
Baylor College of Medicine
Section Head, General Thoracic Surgery
Michael E. DeBakey VA Medical Center
Houston, Texas

Rahul Damani, MD, MPH
Associate Professor
Neurology and Neurosurgery
Vascular Neurology & Neuro-Critical Care
Faculty, Space Medicine
Program Director, Neurocritical Care Fellowship
Associate Program Director, Neurology Residency
Baylor College of Medicine
St. Luke's Health – Baylor St. Luke's Medical Center
Houston, Texas

Nikolaos Diakos, MD, PhD
Academic Professional Staff
The Texas Heart Institute
The Texas Heart Institute Center for Cardiovascular Care
St. Luke's Health – Baylor St. Luke's Medical Center
Houston, Texas

Pratik Doshi, MD, CMQ
Professor, Critical Care Medicine
Associate Professor, Emergency Medicine
Director, Emergency & Critical Care
Medical Director, Advanced Practice Provider Program
Department of Internal Medicine
McGovern Medical School
The University of Texas Health Science Center at Houston
Memorial Hermann Hospital
Houston, Texas

Ryan Dumas, MD
Associate Professor of Surgery
Division of Burn, Trauma, Acute and Critical Care Surgery
Associate Program Director, General Surgery Residency
The University of Texas Southwestern Medical Center
Associate Trauma Medical Director
Parkland Memorial Hospital
Dallas, Texas

Laura Evans, MD, MSc
Professor
Division of Pulmonary, Critical Care and Sleep Medicine
Medical Director, Critical Care UWMC
University of Washington Medical Center
Seattle, Washington

Ramiro Fernandez II, MD
Assistant Professor of Surgery
Division of Thoracic Surgery
Director, Michael E. DeBakey Summer Surgery Program
Michael E. DeBakey Department of Surgery
Baylor College of Medicine
St. Luke's Health – Baylor St. Luke's Medical Center
Houston, Texas

Karin Fox, MD, MEd, FACOG, FAIUM
Professor of Maternal-Fetal Medicine
Director, Placenta Accreta Spectrum Program
The University of Texas Medical Branch at Galveston
Galveston, Texas
Associate Professor
Baylor College of Medicine
Houston, Texas

Hayley B. Gershengorn, MD, FCCM, ATSF
Professor of Clinical Medicine
Division of Pulmonary, Critical Care, and Sleep Medicine
University of Miami, Miller School of Medicine
Intensivist
University of Miami Hospital and Clinics & Jackson Memorial Hospital
Medical Director for Quality Data Analytics & Critical Care Quality
Medical Director for Sepsis
University of Miami Hospital, Miami, Florida

Kamrouz Ghadimi, MD, MHSc
Associate Professor of Anesthesiology
Cardiothoracic Anesthesiology Division
Critical Care Medicine Division
Clinical Research Unit (CRU)
Duke University School of Medicine
Durham, North Carolina

Ravi K. Ghanta, MD, FACS
Professor of Surgery
Division of Cardiothoracic Surgery
Program Director, Thoracic Surgery Integrated Residency
Associate Program Director, Thoracic Surgery Independent Fellowship
Olga Keith Wiess Professor of Surgery II
Baylor College of Medicine
Chief, Cardiac Surgery
Ben Taub Hospital
Houston, Texas

Hernando Gómez Danies, MD, MPH
Associate Professor of Critical Care Medicine and Emergency Medicine
Director, Cardiopulmonary Research Laboratory
Faculty, Program for Critical Care Nephrology
Associate Program Director, Anesthesiology Critical Care Fellowship
Faculty, CRISMA Center
University of Pittsburgh School of Medicine
UPMC
Pittsburgh, Pennsylvania

Deepa Bangalore Gotur, MD
Associate Professor of Clinical Medicine, Academic Institute
Associate Clinical Member, Research Institute
Weill Cornell Medical College
Critical Care Medicine
Houston Methodist Academic Medicine Associates
Houston Methodist
Houston, Texas

Shawn Groth, MD
Associate Professor and Chief
Division of Thoracic Surgery
Associate Program Director, Thoracic Surgery Integrated Residency and Independent Fellowship
Baylor College of Medicine
Director of Esophageal Surgical Services
St. Luke's Health - Baylor St. Luke's Medical Center
Houston, Texas

Astrid Grouls, MD
Assistant Professor
Medicine - Geriatrics & Palliative Medicine
Baylor College of Medicine
St. Luke's Health – Baylor St. Luke's Medical Center
Houston, Texas

Eddy Gutierrez, MD
Critical Care Specialist/Intensivist
Director, Cardiac and Cardiothoracic ICU
Baptist Health
Jacksonville, Florida

Muhammad Hayat Syed, MD
Assistant Professor
Medicine - Pulmonary
Baylor College of Medicine
St. Luke's Health – Baylor St. Luke's Medical Center
Texas Children's Hospital
Ben Taub Hospital
Houston, Texas

James P. Herlihy, MD
Professor
Medicine-Pulmonary
Baylor College of Medicine
St. Luke's Health – Baylor St. Luke's Medical Center
Houston, Texas

Mohammad Hirzallah, MD
Assistant Professor
Neurology
Vascular Neurology and Neurocritical Care
Baylor College of Medicine
St. Luke's Health – Baylor St. Luke's Medical Center
Houston, Texas

Marcus Hoffman, MD, FACS
Assistant Professor of Surgery
Division of Trauma and Acute Care Surgery
Assistant Program Director for UME - SIM
Department of Surgery
Baylor College of Medicine
Baylor St. Luke's Medical Center
Ben Taub Hospital
Houston, Texas

Juliet Holder-Haynes, MD
Associate Professor of Surgery
Division of Metabolic and Bariatric Surgery
Director, General Surgery Clinical Clerkship
Baylor College of Medicine
St. Luke's Health - Baylor St. Luke's Medical Center
General Surgery
Texas Children's Hospital
Houston, Texas

Claire Horner, JD, MA
Assistant Professor
Center for Medical Ethics and Health Policy
Baylor College of Medicine
Clinical Ethicist
Baylor St. Luke's Medical Center
Houston, Texas

Jesmi Jacob, MSN, RN, CCRN Conference Organizer
Registered Nurse
Baylor St. Luke's Medical Center
Houston, Texas

Christina Chen-Yu Kao, MD
Associate Professor
Medicine - Pulmonary
Baylor College of Medicine
St. Luke's Health - Baylor St. Luke's Medical Center
Houston, Texas

Kianoush Kashani, MD, MSc, FASN, FCCP
Professor of Medicine
Assistant Professor of Medical Education
Mayo Clinic College of Medicine and Science
Consultant
Division of Nephrology and Hypertension
Division of Pulmonary and Critical Care Medicine
Department of Internal Medicine
Mayo Clinic
Rochester, Minnesota

Christi Knapp, RN
CHI St. Luke's Health - Baylor St. Luke's Medical Center
Houston, Texas

Piroska Kopar, MD, MBA, FACS
Associate Professor of Surgery
Acute and Critical Care Surgery
Department of Surgery
Washington University School of Medicine in St. Louis
Barnes-Jewish Hospital
St. Louis, Missouri

Donald Lazarus, MD
Assistant Professor of Medicine
Pulmonary, Critical Care and Sleep Medicine
Baylor College of Medicine
Staff Physician, Medical Care Line
Pulmonary/Critical Care/Sleep
Michael E. DeBakey VA Medical Center
Houston, Texas

Scott Leikin, DO
Academic Professional Staff
The Texas Heart Institute
Assistant Professor
Anesthesiology - BSLMC
Baylor College of Medicine
St. Luke's Health - Baylor St. Luke's Medical Center
Houston, Texas

Bradley Lembcke, MD, MBA
President
Baylor St. Luke's Medical Center
Faculty
Medicine-General Med/Ben Taub
Baylor College of Medicine
Houston, Texas

Jennifer Leonard, MD, PhD Conference Organizer
Associate Professor of Surgery
Division of Trauma & Acute Care Surgery
Baylor College of Medicine
Houston, Texas

N. Eddie Liou, MD, FACS
Associate Professor
Otolaryngology-Head & Neck Surgery
Neurological Surgery
Baylor College of Medicine
St. Luke's Health - Baylor St. Luke's Medical Center
Houston, Texas

Prasad Manian, MD, MBBS
Professor
Department of Medicine
Pulmonary and Critical Care Medicine
Baylor College of Medicine
Chief, Critical Care Service
St. Luke's Health - Baylor St. Luke's Medical Center
Houston, Texas

Faisal N. Masud, MD, FCCP, FCCM
Professor of Clinical Anesthesiology & Critical Care, Academic Institute
Medical Director, Center for Critical Care
Mary A. and M. Samuel Daffin, Sr. Centennial Chair in Anesthesia and Critical Care,
Houston Methodist
Weill Cornell Medical College
Vice Chair, Quality and Patient Safety
Medical Director, CVICU
Houston Methodist DeBakey Heart & Vascular Center
Houston Methodist, Houston, Texas

Nilesh Mathuria, MD
Associate Professor of Clinical Cardiology, Academic Institute
Associate Clinical Member, Research Institute
Houston Methodist
Weill Cornell Medical College
Houston Methodist DeBakey Cardiology Associates
Houston, Texas

Blake Menchaca, AGACNP
Nurse Practitioner
MICU
CHI Baylor Anesthesia and Critical Care
Baylor College of Medicine
St. Luke's Health - Baylor St. Luke's Medical Center
Houston, Texas

Martha Mims, MD, PhD
Professor and Chief
Medicine
Hematology & Oncology
Associate Director of Clinical Research
Dan L. Duncan Comprehensive Cancer Center
Dan L. Duncan Professorship
Baylor College of Medicine
St. Luke's Health - Baylor St. Luke's Medical Center
Houston, Texas

Loyce Mofor, AGACNP-BC
Assistant Professor of Surgery
Division of Trauma and Acute Care Surgery
Baylor College of Medicine
Lead APP, Critical Care Services
St. Luke's Health - Baylor St. Luke's Medical Center
Houston, Texas

Daniela Moran, MD, FCCP
Assistant Professor of Clinical Medicine
Academic Institute, Houston Methodist
Weill Cornell Medical College
MICU Intensivist, Houston Methodist Department of Medicine
Houston Methodist Academic Medicine Associates
Houston Methodist, Houston, Texas

Christopher Morgan, MD
Assistant Professor
Medicine - Pulmonary
Baylor College of Medicine
St. Luke's Health - Baylor St. Luke's Medical Center
Houston, Texas

Sarah Morrissey, MS, APRN, FNP-BC
Assistant Professor/Nurse Practitioner
Department of Surgery
David J. Sugarbaker Division of Thoracic Surgery
Assistant Director of Advanced Practice Providers - Inpatient Surgery Services
Baylor College of Medicine
St. Luke's Health - Baylor St. Luke's Medical Center
Houston, Texas

David Muigai, MD
Chief of Critical Care Medicine
HCA Houston Healthcare Medical Center
Houston, Texas

Ajith P. Nair, MD, FACC, FAHA
Academic Professional Staff
The Texas Heart Institute
Associate Professor
Medicine - Cardiology
Baylor College of Medicine
Director, Baylor St. Luke's Advanced Heart Failure Clinic
St. Luke's Health - Baylor St. Luke's Medical Center
Houston, Texas

Dharani K. Narendra, MD
Assistant Professor
Medicine
Pulmonary Critical Care and Sleep Medicine
Baylor College of Medicine
Ben Taub Hospital
Critical Care
Texas Children's Hospital
Houston, Texas

Ali Omranian, MD
Assistant Professor and Critical Care Physician
Critical Care Medicine
Medicine - Pulmonary / Critical Care and Sleep
Baylor College of Medicine
Medical Director of Critical Care, ICU
St. Luke's Sugarland Hospital
Houston, Texas

Vicente Orozco-Sevilla, MD, FACS
Academic Professional Staff
The Texas Heart Institute
Assistant Professor of Surgery
Division of Cardiothoracic Surgery
Assistant Program Director, Thoracic Surgery Integrated Residency
Michael E. DeBakey Department of Surgery
Baylor College of Medicine
St. Luke's Health – Baylor St. Luke's Medical Center
Houston, Texas

Yangseon Park, MD
Academic Professional Staff
The Texas Heart Institute
Assistant Professor
Anesthesiology
Baylor College of Medicine
St. Luke's Health – Baylor St. Luke's Medical Center
Houston, Texas

Stephen M. Pastores, MD, MACP, FCCP, FCCM
Professor of Medicine, Anesthesiology and Medicine
Weill Cornell Medical College
Cornell University
Director, Critical Care Medicine Fellowship Training & Research Programs
Vice-Chair of Education
Department of Anesthesiology and Critical Care Medicine
Memorial Sloan Kettering Cancer Center
New York, New York

Giang (Zane) Quach, DO
Assistant Professor of Surgery
Division of Trauma and Acute Care Surgery
Baylor College of Medicine
Director, Surgical Intermediate Care Unit
Associate Director, Surgical Intensive Care Unit
St. Luke's Health – Baylor St. Luke's Medical Center
Houston, Texas

Aniket Rali, MD, FCCP, FACC
Assistant Professor of Medicine and Anesthesiology
Advanced Heart Failure and Transplantation and Critical Care Medicine
Division of Cardiovascular Medicine
Vanderbilt University Medical Center
Nashville, Tennessee

Chethan Rao, MD, FNCS
Associate Professor
Neurology and Neurosurgery
Vascular Neurology and Neurocritical Care
Section Head, Neurology
Vascular Neurology and Neurocritical Care
Program Director, Neurology, Neurocritical Care Fellowship
Faculty, Center for Space Medicine
William T. Butler, MD, Endowed Chair for Distinguished Faculty
Baylor College of Medicine
Medical Director, Neuroscience Critical Care Unit
St. Luke's Health – Baylor St. Luke's Medical Center
Houston, Texas

Syed Raza, MD
Vice President of Medical Operations
Baylor St. Luke's Medical Center
Houston, Texas

Meredith Reyes, MD
Associate Professor
Pathology
Baylor College of Medicine
Medical Director, Transfusion, Coagulation, and Point of Care Testing
CHI St Luke's Health
St. Luke's Health – Baylor St. Luke's Medical Center
Houston, Texas

Jose Ribas Roca, MD
Assistant Professor
Psychiatry & Behavioral Sciences
Baylor College of Medicine
St. Luke's Health - Baylor St. Luke's Medical Center
Houston, Texas

Karen Riggins, MD, PhD
Assistant Professor
Medicine - Hematology & Oncology
Baylor College of Medicine
Ben Taub Hospital
Houston, Texas

R. Taylor Ripley, MD
Associate Professor of Surgery
Division of Thoracic Surgery
Co-Director, Thoracic Oncology Working Group
Dan L. Duncan Comprehensive Cancer Center
Director of General Thoracic Surgery Research
Michael E. DeBakey Department of Surgery
Meyer-DeBakey Chair in Investigative Research
Baylor College of Medicine
Director, Mesothelioma Treatment Center
St. Luke's Health - Baylor St. Luke's Medical Center
Houston, Texas

Syed Rizvi, MD
Assistant Professor, Critical Care Medicine
Department of Internal Medicine
McGovern Medical School
The University of Texas Health Science Center at Houston
Memorial Hermann
Houston, Texas

Yesenia Rojas-Khalil, MD, FACS
Assistant Professor of Surgery
Division of Surgical Oncology
Section of Colorectal Surgery
Assistant Program Director for GME - SIM
Department of Surgery
Baylor College of Medicine
Baylor St. Luke's Medical Center
Houston, Texas

Javeryah Safi, MD
Assistant Professor
Medicine - Interventional Pulmonary
Pulmonary and Critical Care Medicine
Baylor College of Medicine
St. Luke's Health – Baylor St. Luke's Medical Center
Houston, Texas

Matthew Segar, MD, MS
Cardiology Fellow
The Texas Heart Institute Cardiovascular Disease Fellowship
Baylor St. Luke's Medical Center
Houston, Texas

Priyanka Sen, MD
Texas Heart & Vascular Specialists
St. Luke's Health – Baylor St. Luke's Medical Center
Houston, Texas

Mourad Senussi, MD, MS
Academic Professional Staff
The Texas Heart Institute
Assistant Professor
Medicine - Cardiology & Critical Care Medicine
Baylor College of Medicine
Medical Director of CICU
St. Luke's Health – Baylor St. Luke's Medical Center
Houston, Texas

Alexis Shafii, MD, FACS
Academic Professional Staff
The Texas Heart Institute
Associate Professor of Surgery, Cardiothoracic Transplant & Circulatory Support
Jimmy and Roberta Howell Professor in Cardiovascular Surgery
Baylor College of Medicine
Surgical Director, Heart Transplantation
St. Luke's Health – Baylor St. Luke's Medical Center
Houston, Texas

Amir Shamshirsaz, MD
Assistant Professor
Obstetrics and Gynecology/Division of Maternal Fetal Medicine
Medicine/Division of Pulmonary Critical Care
Baylor College of Medicine
Maternal Fetal Medicine Center
Texas Children's Fetal Center
Texas Children's Hospital
Houston, Texas

Ravi K. Shastri, MD
Assistant Professor, Radiology
Neurointerventional Radiology
Baylor College of Medicine
St. Luke's Health – Baylor St. Luke's Medical Center
Houston, Texas

Muhammad Siddique, MD
Associate Professor
Internal Medicine
Chief of Clinical Operations
Pulmonary/Critical Care and Sleep Medicine
Baylor College of Medicine
Director, ICU
St. Luke's Health – Baylor St. Luke's Medical Center
Chief, Adult Care Critical Medicine
Texas Children's Hospital
Houston, Texas

Rise Stribling, MD
Associate Professor of Surgery
Division of Abdominal Transplantation
Baylor College of Medicine
Medical Director, Liver Transplantation
Michael E. DeBakey VA Medical Center
Medical Director, Liver Transplantation
St. Luke's Health - Baylor St. Luke's Medical Center
Houston, Texas

Orlando Suero, MD
Assistant Professor
Anesthesiology - BSLMC
CV Anesthesia & Critical Care Medicine
Baylor College of Medicine
St. Luke's Health – Baylor St. Luke's Medical Center
Houston, Texas

Katherine Timmins, MD
Renal Specialists of Houston, PA
Kidney Transplant Program Director
St. Luke's Health – Baylor St. Luke's Medical Center
Memorial Hermann Health System
Houston Methodist
Houston, Texas

Mary Tolcher, MD, MSc
Assistant Professor
Obstetrics and Gynecology
Maternal-Fetal Medicine
Baylor College of Medicine
Ben Taub Hospital
Houston, Texas

Sergio Trevino Castillo, MD
Assistant Professor
Medicine-Pulmonary
Baylor College of Medicine
St. Luke's Health – Baylor St. Luke's Medical Center
Houston, Texas

Sri Kartik Valluri, MD
Assistant Professor, Department of Anesthesiology
Cardiovascular, Transplant & MCS
Critical Care Medicine
Baylor College of Medicine
St. Luke's Health – Baylor St. Luke's Medical Center
Houston, Texas

R. Mario Vera, MD, FACS
Assistant Professor of Surgery
Division of Trauma and Acute Care Surgery
Associate Program Director, General Surgery Residency - SIM
Baylor College of Medicine
Director, Emergency General Surgery
Ben Taub Hospital
Houston, Texas

Sharon Vu, NP
Clinical Operations Coordinator and Nurse Practitioner
Houston Methodist Critical Care Recovery Clinic
Houston Methodist
Houston, Texas

Jeremy Ward, MD, FACS
Associate Professor of Surgery
Division of Trauma and Acute Care Surgery
Program Director, Surgical Critical Care Fellowship
Baylor College of Medicine
Medical Director, Trauma Surgical ICU
Ben Taub Hospital
Houston, Texas

Robert Webster, RN, BSN, MPAS, PA-C
Clinical Assistant Professor
Physician Assistant Program
Baylor College of Medicine
Critical Care/Anesthesia
St. Luke's Health – Baylor St. Luke's Medical Center
Houston, Texas

Patrick Wieruszewski, PharmD, RPh
Assistant Professor of Anesthesiology and Pharmacy
Mayo Clinic School of Medicine
Critical Care Pharmacist
Cardiothoracic Surgery ICU and ECMO Program
Mayo Clinic
Rochester, Minnesota

Anna Han Xue, MD
Assistant Professor of Surgery
Division of Cardiothoracic Surgery
Baylor College of Medicine
St. Luke's Health – Baylor St. Luke's Medical Center
Houston, Texas

Edward Yang, MD
Assistant Professor
Anesthesiology - BSLMC
CV Anesthesia & Critical Care Medicine
Baylor College of Medicine
St. Luke's Health – Baylor St. Luke's Medical Center
Houston, Texas

Ellen B. Yin, PharmD, BCCP
Department of Pharmacy
St. Luke's Health – Baylor St. Luke's Medical Center
Houston, Texas

Sergio Zanotti-Cavazzoni, MD, FCCM
Critical Care
Pulmonary Disease & Critical Care
Memorial Hermann
Houston, Texas

Chief Medical Officer
Sound Critical Care
Sound Physicians
Bellaire, Texas

Martin Zielinski, MD, FACS
Chief, Division of Trauma and Acute Care Surgery
Baylor College of Medicine
St. Luke's Health – Baylor St. Luke's Medical Center
Houston, Texas

Faculty Disclosure Statement

As an accredited provider of continuing medical education for physicians, Texas Heart Institute is committed to ensuring its educational activities are fair, balanced, independent, objective, evidence-based and support safe and effective patient care. The ACCME Standards for Integrity and Independence require that we collect disclosure from anyone who has control of the content of a CME activity. All individuals in control of content have disclosed all financial relationships that they have had in the past 24 months with ineligible companies. The ACCME defines an “ineligible company” as any entity whose primary business is producing, marketing, selling, re-selling, or distributing healthcare products used by or on patients.

Subhasis Chatterjee, MD, FACS, FACC, FCCP* is on advisory board for Eagle Pharmaceuticals
Jose L. Diaz-Gomez, MD, MAS, FCCM, FASE, NCC (UCNS)* has nothing to disclose relevant to this program.
Christopher Howard, MD, FCCP* has nothing to disclose relevant to this program.
Fatima Adhi, MD has nothing to disclose relevant to this program.
Muhammad Adrish, MD, MBA is a consultant for AstraZeneca.
Bindu Akkanti, MD has nothing to disclose relevant to this program.
Kwame Akuamoah-Boateng, DNP, ACNP-BC, BSN has nothing to disclose relevant to this program.
Philip Alapat, MD is a consultant for Resmed.
Sarah Allen Skinner, PA-C has nothing to disclose relevant to this program.
Connie Arrington, AGA CNP-BC has nothing to disclose relevant to this program.
Marie Baldisseri, MD, MPH, FCCM has nothing to disclose relevant to this program.
Jason Bartos, MD, PhD has nothing to disclose relevant to this program.
Kristin Beck, DPT has nothing to disclose relevant to this program.
Anju Bhardwaj, MD, FACC, FHFSa is on medication review committee for research trial for Impulse Dynamics
Shanda Blackmon, MD, MPH, FACS has nothing to disclose relevant to this program.
Christopher Broda, MD has nothing to disclose relevant to this program.
Cesar Castillo, MD has nothing to disclose relevant to this program.
Ramya Castillo, PharmD has nothing to disclose relevant to this program.
Tiffany Chang, MD has nothing to disclose relevant to this program.
Jayer Chung, MD, MSC is a research for Becton Dickinson, Boston Scientific and Penumbra Inc.
Andrew Civitello, MD has nothing to disclose relevant to this program.
Russell Clark, PharmD, BCOP, RPh has nothing to disclose relevant to this program.
Holly Clayton, MPAS, PA-C has nothing to disclose relevant to this program.
Keegan Collins, MPAS, PA-C has nothing to disclose relevant to this program.
Lorraine Cornwell, MD has nothing to disclose relevant to this program.
Rahul Damani, MD has nothing to disclose relevant to this program.
Nikolaos Diakos, MD, PhD has nothing to disclose relevant to this program.
Pratik Doshi, MD, CMQ has nothing to disclose relevant to this program.
Ryan Dumas, MD, FACS is a speaker for Teleflex, Inc., and a strategic advisor for Surgical Safety Technologies
Laura Evans, MD, MSc has nothing to disclose relevant to this program.
Ramiro Fernandez II, MD has nothing to disclose relevant to this program.
Karin Fox, MD, M.Ed is a speaker for SMFM/Banner Health, received grant from NICHD
Hayley Gershengorn, MD, FCCM, ATSF has nothing to disclose relevant to this program.
Kamrouz Ghadimi, MD, MHSc receives grant support for Octapharma, PCORI and International Anesthesia Research Society
Ravi Ghanta, MD has nothing to disclose relevant to this program.
Hernando Gomez Danies, MD, MPH is a consultant for Trilinear Bioventures, receives is PI of research grant for Baxter. He is PI of research grant and receives royalties for a lecture for BioMerieux. A one-time consultant for Talphera.
Deepa Gotur, MD has nothing to disclose relevant to this program.
Shawn Growth, MD has nothing to disclose relevant to this program.
Astrid Grouls, MD has nothing to disclose relevant to this program.
Eddy J. Gutierrez, MD is a speaker for Abiomed, Fisher & Paykel and Edwards Lifesciences.
Muhammad Hayat Syed, MD has nothing to disclose relevant to this program.
James P. Herlihy, MD has nothing to disclose relevant to this program.
Mohammad Hirzallah, MD has nothing to disclose relevant to this program.
Juliet Holder-Haynes, MD has nothing to disclose relevant to this program.
Marcus Hoffman, MD, FACS has nothing to disclose relevant to this program.
Claire Horner, JD, MA has nothing to disclose relevant to this program.
Jesmi Jacob, MSN, RN, CCRN has nothing to disclose relevant to this program.
Christina Kao, MD, PhD has nothing to disclose relevant to this program.
Kianoush Kashani, MD, MSc, FASN, FCCP has nothing to disclose relevant to this program.
Christie Knapp, RN has nothing to disclose relevant to this program.
Piroska Kopar, MD, MBA, FACS has nothing to disclose relevant to this program.

Donald Lazarus, MD, FACP, DAABIP has nothing to disclose relevant to this program.
Scott Leikin, DO is a consultant for Werfen
Bradley Lembcke, MD, MBA has nothing to disclose relevant to this program.
Jennifer Leonard, MD, PhD has nothing to disclose relevant to this program.
N. Eddie Liou, MD, FACS has nothing to disclose relevant to this program.
Prasad Manian, MD has nothing to disclose relevant to this program.
Faisal Masud, MD, FCCP, FCCM is on advisory board for AstraZeneca, Gilead and Telflex
Nilesh Mathuria, MD has nothing to disclose relevant to this program.
Blake Menchaca, AGACNP has nothing to disclose relevant to this program.
Martha Mims, MD, PhD, BA has stock ownership for Amgen and Biogen; clinical trial conduct for Millenium and Janssen
Loyce Mofor, AGACNP-BC has nothing to disclose relevant to this program.
Daniela Moran, MD, FCCP has nothing to disclose relevant to this program.
Christopher Morgan, MD has nothing to disclose relevant to this program.
Sarah Morrissey, MS, APRN, FNP-BC has nothing to disclose relevant to this program.
David Muigai, MD has nothing to disclose relevant to this program.
Ajith Nair, MD, FACC, FAHA has nothing to disclose relevant to this program.
Dharani Narendra, MD has nothing to disclose relevant to this program.
Ali Omranian, MD has nothing to disclose relevant to this program.
Vicente Orozco-Sevilla, MD is an advisor for Cool Medical, and researcher for Gore Medical.
Yangseon Park, MD has nothing to disclose relevant to this program.
Stephen Pastores, MD, MACP, FCCP, FCCM is a consultant and speaker for Thermo Fisher Scientific. He receives research support as PI for clinical trial for RevImmune
Giang (Zane) Quach, DO has nothing to disclose relevant to this program.
Aniket Rali, MD, FCCP, FACC has nothing to disclose relevant to this program.
Chethan Rao, MD has nothing to disclose relevant to this program.
Syed Raza, MD has nothing to disclose relevant to this program.
Meredith Reyes, MD, BS has nothing to disclose relevant to this program.
Jose Ribas Roca, MD has nothing to disclose relevant to this program.
Karen Riggins, MD, PhD has nothing to disclose relevant to this program.
R. Taylor Ripley, MD has nothing to disclose relevant to this program.
Syed Rizvi, MBBS, FACP has nothing to disclose relevant to this program.
Yesenia Rojas-Khalil, MD has nothing to disclose relevant to this program.
Javeryah Safi, MBBS has nothing to disclose relevant to this program.
Alexander Schutz, MD has nothing to disclose relevant to this program.
Matthew Segar, MD is a consultant for ParaDocs Health and AccurKardia. He is a board member for descendantsDNA.
Priyanka Sen, MD has nothing to disclose relevant to this program.
Mourad Senussi, MD, MS has nothing to disclose relevant to this program.
Alexis Shafii, MD has nothing to disclose relevant to this program.
Amir Shamshirsaz, MD is a consultant and receives royalties for UpToDate. An editor and receives royalties for Wiley Blackwell. He receives honoraria for Critical Care in Obstetrics.
Ravi Shastri, MD has nothing to disclose relevant to this program.
Rise Stribling, MD has nothing to disclose relevant to this program.
Orlando Suero, MD has nothing to disclose relevant to this program.
Katherine Timmins, MD has nothing to disclose relevant to this program.
Mary Tolcher, MD, MSc has nothing to disclose relevant to this program.
Sergio Trevino Castillo, MD has nothing to disclose relevant to this program.
Sri Kartik Valluri, MD has nothing to disclose relevant to this program.
Roberto Mario Vera, MD, FACS has nothing to disclose relevant to this program.
Sharon Vu, AGACNP has nothing to disclose relevant to this program.
Jeremy Ward, MD has nothing to disclose relevant to this program.
Robert Webster, PA-C has nothing to disclose relevant to this program.
Amy Westwick Butcher, PA-C
Patrick Wieruszewski, Pharm.D, R.Ph is a consultant for Viatris
Anna Xue, MD has nothing to disclose relevant to this program.
Edward Yang, MD has nothing to disclose relevant to this program.
Ellen Yin, PharmD, BCCP has nothing to disclose relevant to this program.
Sergio Zanotti-Cavazzoni, MD, FCCM has nothing to disclose relevant to this program.
Martin Zielinski, MD, FACS has nothing to disclose relevant to this program.
The THI CME Staff have nothing to disclose
The Program Reviewers have nothing to disclose
All relevant financial relationships have been mitigated. *Program Directors

Exhibitors

We thank the companies listed here for exhibiting at this symposium:

Abbott

Abiomed

BioMerieux

Ceribell

Edwards

Haemonetics

Infla-Rx

ISTX (Innoviva Specialty Therapeutics)

Mallinckrodt Pharmaceuticals

Medtronic

Medvision SDT

Spectrum Medical

Verathon | GlideScope & Bflex

EDUCATIONAL GRANTS

This continuing medical education activity has been supported,
in part, by the following companies:

Abiomed

Innoviva

Medtronic

Baylor
College of
Medicine®